

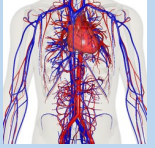
Feel the Beat!

The Christian Values we are reflecting upon in Term 5 and 6 are Trust and Thankfulness with Hope and Humility. Our Character Education Trait is resilience.

During this term we will continue to enrich our learning with Spiritual, Moral, Social and Cultural (SMSC) aspects of our curriculum by focussing on our transition to secondary school and our relationships with our peers.

The human body and the circulatory system.

Healthy Lifestyles.



Year 6

D.A.a.R.T
Growing and changing
Transition to Secondary school
Spark Resilience

PSHE

Science

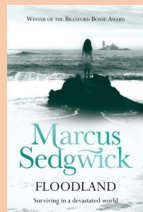
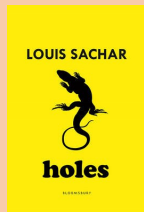
PE

DT/Art

Computing
Code.org
E-Safety
Managing Online Information.
Privacy and Security.
Copyright and Ownership.

DT
Cooking— Designing and making a salad
Art
Designing and making clay Mayan Masks

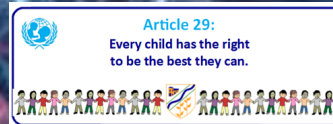
English
Grammar revision, suspense writing, narratives, letters and poetry.



History
The impact the ancient Maya legacy had on the rest of the world.

RE
Life Journeys in Hinduism and Islam

Athletics
Rounders
Swimming
Cricket
Sports Day



Mathematics
Problem solving and investigations.
Revision of the curriculum.

Y6 Production