



Bourne Abbey

Autumn Term

18th October 2022



SUPPORT



As a school we are very aware of the increased pressure on family finances due to the current economic climate.

Please do let us know if you require any additional support for any school related expenses by emailing

BAP.enquiries@abbeyacademies.co.uk

GOLDEN BOOK



Please note when invited for Golden Book you may wait under the KS2 hall canopy. There is no need for you to enter via the school office.

Thank you.

Parking



We have once again had some concerns raised by local residents about inconsiderate and dangerous parking around the school.

Please, please be considerate of all of our neighbours and **DO NOT** park or wait on private property; across gateways; on double yellow lines; on footpaths or in the school safety zone. Please put your children's safety first and think about how you would feel as a householder in the same circumstances.

Thank you for your co-operation.

END OF TERM



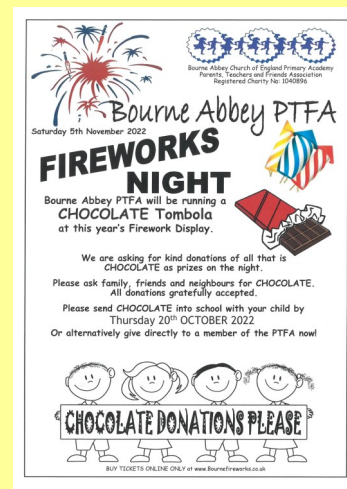
Last day of term is

Thursday 20th October at 3.15 p.m.

(Please remember Friday 21st October is Staff Training Day)

First Day of Term 2 is
Monday 31st October

PTFA Chocolate Donations



Please send chocolate donations for the PTFA Tombola into school with your child by **Thursday 20th October.**

Thank you as always for your support.



ANIMALS ON SCHOOL PREMISES

Whilst we do love animals we must ask parents/Carers to respect our school policy of no animals on school property even if they are being carried.

This also includes not tying dogs to the school fence or railings while you drop off or collect your child.

Thank you for your support.



Water Bottles



With reference to our previous Update, please note replacement bottles are available to purchase via the ParentMail Shop and not direct from the school office.

Thank you.

Contact Details



If you have recently changed your address, telephone numbers or email address, please ensure you notify the school office or email

BAP.enquiries@abbeyacademies.co.uk

It is important that the information we hold for you is up to date.

Attendance Matters



Our attendance is currently at **95%**. This is a fantastic start but ideally we would like to be above 96%.

Please may we remind you of the following:-

- ◆ Ensure you contact school by 9.00 a.m. on your child's first day of absence. In the first instance you should telephone school on 01778 422163. If you do need to email please use BAP.absence@abbeyacademies.co.uk and not the enquiries email address.
- ◆ Being late has a negative impact on your child's learning. We do have to record and report all late arrivals to the Local Authority. School starts promptly at 8.55 a.m. and gates are open from 8.45 a.m. Please ensure your child is here on time.
- ◆ Please try to make medical appointments outside of school time as they do cause disruption to learning. If your child has to be seen during the school day, please ensure that they don't take the whole day off. We may ask you to provide medical evidence.
- ◆ Holidays taken during the school term are extremely disruptive for both pupils and teaching staff and they should be avoided. Whilst it is recognised that there are exceptional circumstances when leave during the term may be required, parents/carers are asked to carefully consider the effects upon their children's learning.

Thank you for your cooperation.