

# Shall we go on a Safari?

**Habitats and microhabitats**



**Science**

**Food chains**



**Art**  
Art in nature—Andy Goldsworthy.  
Natural sculptures and repeating patterns.



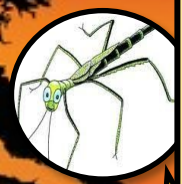
**Salvation**  
Understand how Easter fits into the 'Big Story' in the Bible. Look at the meaning of Salvation.



**R.E**

**PSHE**

**Zippy's Friends:**  
'Conflict Resolution' and 'Dealing with Change and Loss.'



**Geography**

Identify the equator and the North and South Pole. Know the world's continents and oceans. Compare Kenya to the UK.

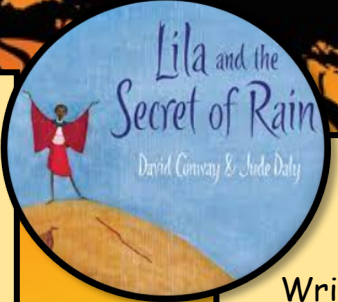


**Music**

Singing and composing.

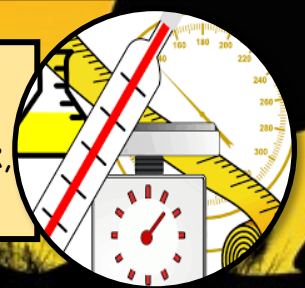


During this topic we will be studying some of the Spiritual, Moral, Social and Cultural (SMSC) aspects by learning about other religions and why we should respect other faiths. We will be learning about our surrounding world and reflecting on our role in caring for it and all that lives in it. Our Christian Values this term are **Hope and Trust** and next term we will be exploring the value of **Humility**.



**English**  
Reading and comparing books set in Africa. Writing non-chronological reports about animals and their habitats. Writing our own versions of stories with alternative endings.

**Mathematics**  
Measurement: Exploring length and height, mass, capacity and temperature. Telling the time (o'clock, half past, quarter past, quarter to)



**Computing**

Computing: To Code  
E-Safety - Managing online information. Understanding privacy and security.



conditions

living

dead

never alive

alive

habitat

micro-habitat

food chain

shelter

seashore

woodland

ocean

rainforest

savannah

equator

climate

country

continent

compare

ocean

human feature

physical feature

location

nature

pattern

symmetrical

structure

repetition

line

shape

geometric

salvation

Easter

forgiveness

sacrifice

confession

resurrection

incarnation

thankfulness

measure

centimetres

metres

grams

kilograms

litres

millilitres

quarter past

quarter to