



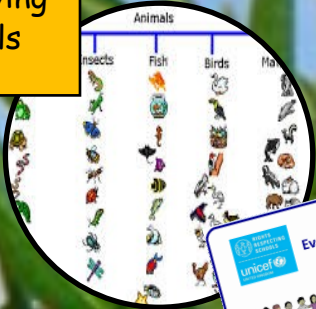
Animal habitats



Life Cycles

Science

Classifying animals



Music

Singing and Composing.



During this topic we will be studying some of the Spiritual, Moral, Social and Cultural (SMSC) aspects by learning about other religions and why we should respect other faiths. We will be learning about our surrounding world and reflecting on our role in caring for it and all that lives in it. Our Christian Value this term is **Hope and Trust** and next term we will be exploring the value of **Humility**.



Art in Nature—Andy Goldsworthy.
Natural Sculptures and repeating patterns.

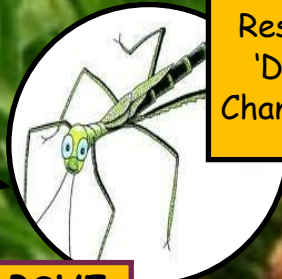
Art



Salvation
Understand how Easter fits into the 'Big Story' in the Bible. Look at the meaning of Salvation.

R.E

Zippy's Friends:
'Conflict Resolution' and 'Dealing with Change and Loss.'

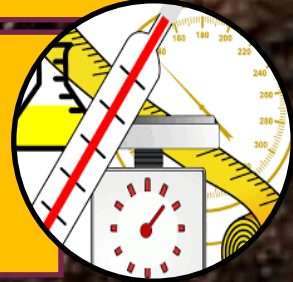


PSHE



English
Recapping spelling, punctuation and grammar.
Reading books about animals and their habitats. Comparing similar books and stories. Writing our own versions of stories with alternative endings.

Mathematics
Fractions, Shapes—2D and 3D, discussing their properties and comparing.
Exploring length, mass and volume.
Solving a range of word problems.



Computing
Habitat fact finding;
E-safety: Staying safe online;
Powerpoint; Ipad apps.

living
dead
never alive
alive
habitat
micro-habitat
food
food chain
shelter
seashore
woodland
ocean
rainforest

conditions
hot
warm
cold
dry
damp
wet
bright
shade
dark

art
nature
pattern
symmetrical
structure
repetition
line
shape
geometric

Jesus
God
salvation
Easter
crucifixion
forgiveness
sacrifice
confession
resurrection
incarnation

